

CTR GEN 2 Linear System



KEY ADVANTAGES

- Designed for industrial spaces
- 1.5 and 3m tracks
- Modular installation of luminaires
- Reduced weight for easy installation
- Quick and efficient installation without tools
- A continuous system, an infinite number of variants
- Stainless Steel profile
- Available with 6 optical distributions
- Energy Efficient: 190 lm/W
- Robustness: IP40
- Lifetime L80B50 50,000h at Ta of 25°C
- 5 years warranty
- Emergency 3 hours.



IP40

CI

White

EM 3H

DESCRIPTION

CTR GEN 2 is the electrified track from Carandini designed for indoor installation. It is a dust- and moisture-proof luminaire, making it ideal for industrial spaces, logistics centers, warehouses, corridors, and other similar areas.

Its modular design and high-quality lighting make it the best solution for industrial areas.



4000K
CRI>80

STANDARDS / CERTIFICATES

- CE
- RoHS
- UNE EN 60598-1:2009
- UNE EN 60598-2-3:1999
- UNE EN 62384:2007
- UNE 61347-2-13: 2007
- UNE EN 55015:2013,
- UNE EN 61000-3-2:2014
- UNE EN 61000-3-3
- UNE EN 61547



5.750 lm - 13.150 lm



-20°C - +40°C



190 lm/W



Luminaire :
1,9 kg

Track:
1,5m: 1,9 Kg
3m: 3,6Kg

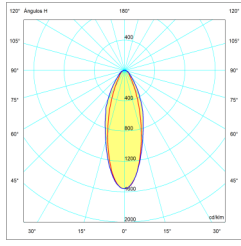
Distributor **EPK elektro s.r.o.**

info@carandini.cz - www.carandini.cz

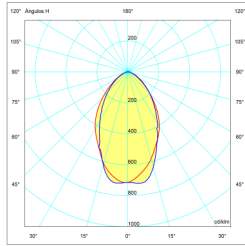
NOTE: Correct data on the date of printing. The company reserves the right to change the value at any time.

V1. 10/03/2026

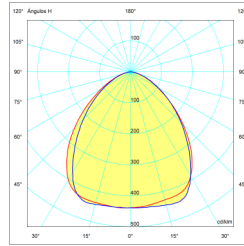
It has 6 photometric distributions used for the environments in which this type of luminaire is installed, allows it to adapt to all needs:



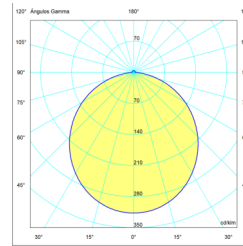
IS03



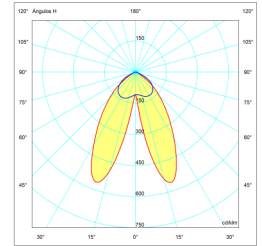
IS06



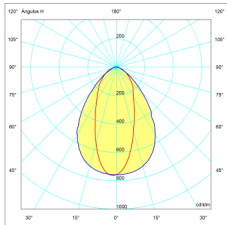
IS09



IS12



ISAA



IS0A

DIMENSIONS

Track

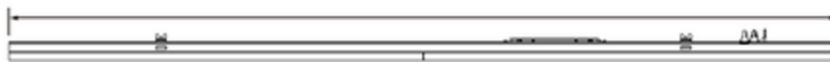
L: 1472 / 2944 mm



W : 64 mm H : 43.5 mm

Luminaire

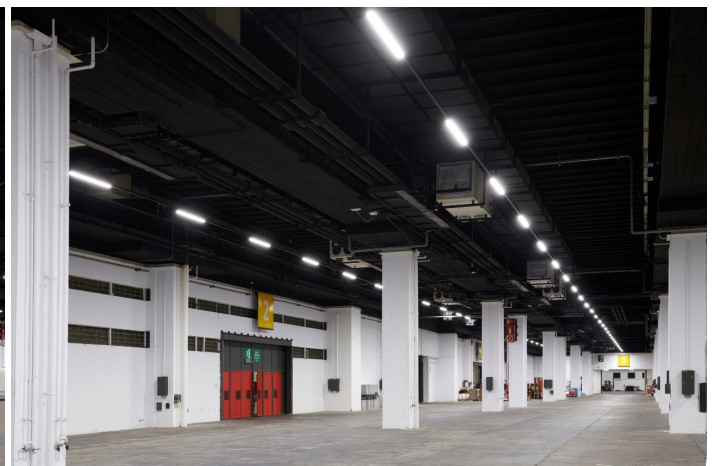
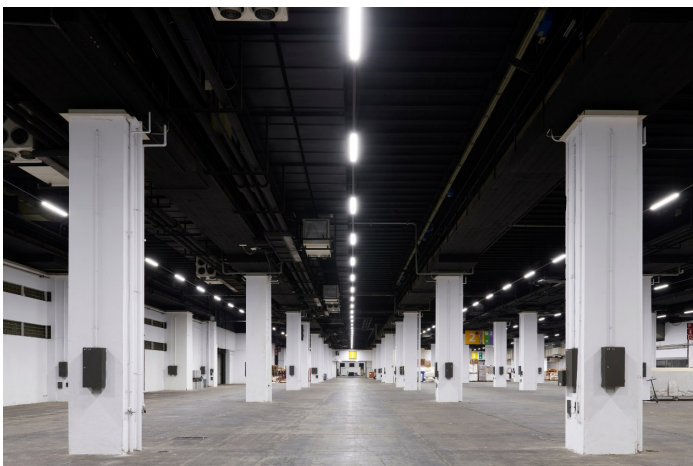
L: 1472 mm



W : 64 mm H : 56.4 mm

APPLICATIONS

Corridors and shelves, industrial buildings, warehouses, and logistics areas.



Distributor EPK elektro s.r.o.

info@carandini.cz - www.carandini.cz

NOTE: Correct data on the date of printing. The company reserves the right to change the value at any time.

CTR LINEAR SYSTEM CHARACTERISTICS

GENERAL INFORMATION

Sustainability	Valorisation: 89,11% Maximum carbon footprint per use: 0,020942 kg kW/h of CO2
CE marking	Yes
RoHS compliance	Yes

GENERAL CHARACTERISTICS

Materials	Stainless steel profile. Great lightness and thermal conductivity.
Finishes	White-powder-coated
Models	Linear luminaire for fast mounting on electrified track to which luminaires are added using a connector system.
Watertightness	IP40 (EN 60598-1 and EN 60529)
Operating temperature	-20 to +40°C
Lifetime	L80B50 50.000h at Ta de 25°C. Light maintenance values at 25°C. Calculated by TM-21 based on LM-80 data.

ELECTRICAL CHARACTERISTICS

Electrical class	Class I
Input voltage	220V - 240V / 50Hz - 60Hz

MAINTENANCE AND ASSEMBLY

Installation and maintenance	The different modules are easily joined together using mechanical connectors to form a continuous track of the required length (without tools). The track integrates cross wiring with 8 wires of 2.5mm ² section. In the same way as the tracks, the cables are joined along the system using electrical connectors (without tools).
Fixation	Electrified support track for luminaires. With accessories for hanging or recessed mounting.
Track length	Standard modules of 1.5m and 3 metres.
Spacing of connectors	1.5 metres
Fixation	Surface fixation Suspended fixation
Cable length suspension	Fixing cable 2 metres

LIGHTING CHARACTERISTICS

Package real light	5.754 lm (30W) 7.041 lm (37W) 8.458 lm (45W) 10.964 lm (60W) 13.151 lm (74W)
LED colour temperature	4.000K (Neutral White, nw).
Colour rendering index (CRI)	CRI>80.
Photometric distributions	IS12: 120° ISAA: double asymétrique IS03: 30° IS06: 60 ° IS09: 90 ° IS39: asymétrique

MANAGEMENT AND CONTROL

Equipment	DALI protocol adjustable (LRD)
Emergency	With 3-hour Emergency 3W