

HFL / HFL-EM

GEN3



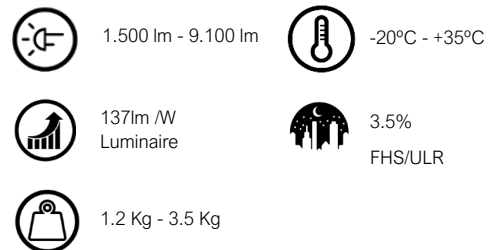
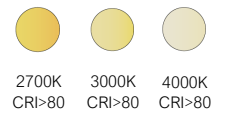
KEY ADVANTAGES

- 4 different sizes.
- Access to the driver and PCB from the side
- for easy maintenance.
- Durability and sturdiness: IP66 + IK10.
- Coextruded polycarbonate.
- Energy Efficient: 137 lm/W
- Smart Ready: Designed to house indoor communication nodes
- Lifespan L90B10 100,000 (Ta) 25°C
- 5 years warranty



DESCRIPTION

The HFL Series is a luminaire with latest Generation LED technology designed for urban and industrial environments. Thanks to its functional design and the different versions and accessories it offers, HFL can be perfectly integrated into residential areas, squares, promenades, urban passages, gardens, parks, industrial premises and logistics areas. It has high performance LEDs, which achieve high-quality lighting with excellent uniformity when integrated into the engineered design of the body.



STANDARDS / CERTIFICATES

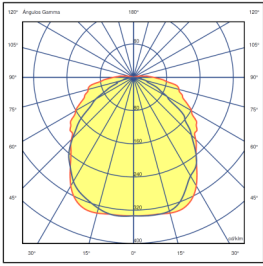
- UNE EN 60598-1:2009
- UNE EN 60598-2-3:2003
- UNE EN 62031:2009
- UNE EN 62384:2007
- UNE 61347-2-13:2007
- UNE EN 62471:2009
- IEC/TR 6247-2:2009
- UNE EN 55015:2013
- UNE EN 61000-3-2:2006
- UNE EN 61000-3-3:2013
- UNE EN 61547:2009
- NF P 92-501/507 (M1)

210 - 240V/100- 277V (optional)
50-60 Hz
L70B10 100,000H
Ta at 25°C

Distributor: EPK elektro s.r.o.
info@carandini.cz - www.carandini.cz

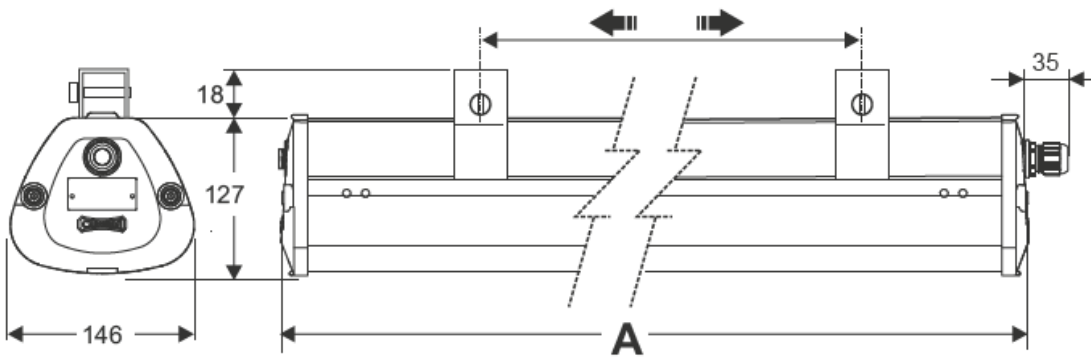
PHOTOMETRIC DISTRIBUTIONS

It has the 1 photometric distributions used for the environments in which this type of luminaire is installed, allows it to adapt to all needs:



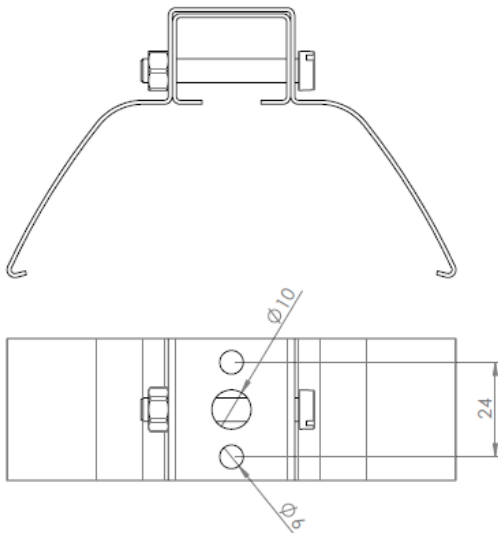
HFL.L023

DIMENSIONS



Module	A (mm)
N	332
S	460
M	679
L	1288

FTS Fixation



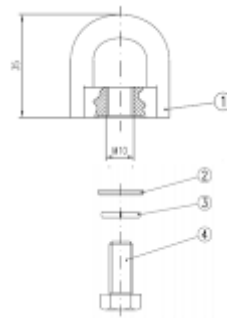
Distributor: EPK elektro s.r.o.
 info@carandini.cz - www.carandini.cz

FIXATIONS ACCESSORIES

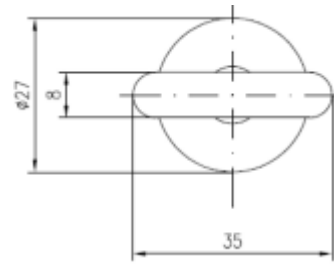
FA: Fixation with ring 2 pcs./ 220 g



Overall elevation:



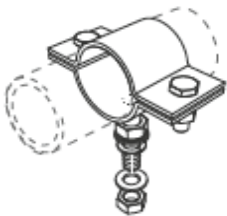
Level:



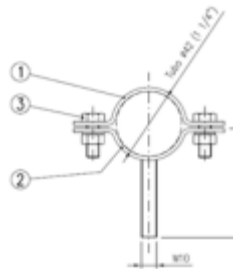
The article is provided with 2 complete sets:

Brand	Name	Material
4	M10x20 hexagonal screw	Stainless steel
3	M10 grower washer	Stainless steel
2	M10 flat washer	Stainless steel
1	Simple ring	Al, Casting

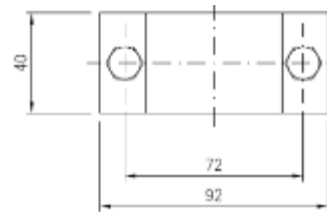
FT42: Fixation to 42mm conduit 2un./732 g



Elevation:



Level:

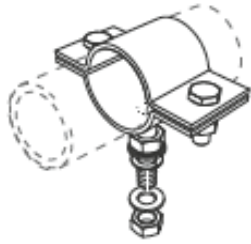


The article is provided with 2 complete sets:

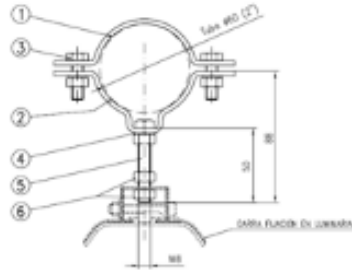
Brand	Name	Material
3	M8 nuts and bolts	Stainless steel
2	Iron bracket with stud	Fe sheet metal, galvanised
1	Iron bracket	Fe sheet metal, galvanised

FIXATIONS ACCESSORIES

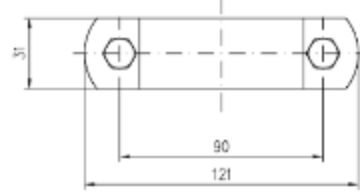
FT60: Fixation to 60mm conduit 2un./829 g



Elevation:



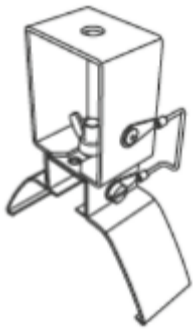
Level:



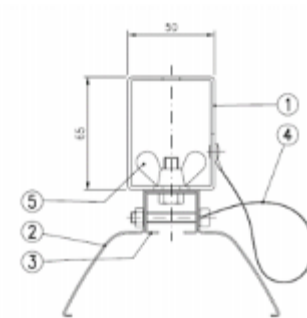
The article is provided with 2 complete sets:

Brand	Name	Material
6	M8 hexagonal screws	Stainless steel
5	M8x50 hexagonal screw	Stainless steel
4	M8 grower washer	Stainless steel
3	M8 nuts and bolts	Stainless steel
2	Iron bracket with screw	Fe sheet metal, galvanised
1	Iron bracket	Fe sheet metal, galvanised

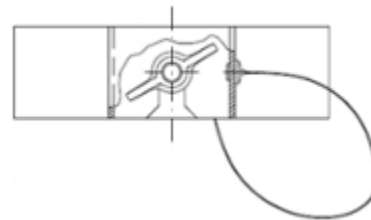
FAR: Ceiling mount with rapid dismounting 2 pcs./481 g



Elevation:



Level:



The article is provided with 2 complete sets:

Brand	Name	Material
5	Wing nut	Stainless steel
4	Suspension cable	Stainless steel
3	Screen support	Stainless steel
2	(HF) suspension support	Stainless steel
1	Recessed mounting support	Stainless steel

HFL / HFL-EM CHARACTERISTICS

GENERAL INFORMATION

Sustainability	Recyclability: 94.57% Maximum carbon footprint per use: 0.019039 Kg Kw/h
CE mark	Yes
RoHS-compliant	Yes
Testing standards	LM 79-80 (all measurements at ISO17025 certified laboratory)

GENERAL CHARACTERISTICS

Diffuser	Single-piece coextruded polycarbonate with an additive which provides protection against UV rays, significantly increasing its durability. Type of polycarbonate: LAS.LEXAN ML-3021 C/A-703 and A-112 DE GE.
Reflector	Aluminium plate, anodized and sealed.
Finish	Body, grey with external protective additive (similar to RAL-7040). Prismatic longitudinal diffuser. Interior treated with protective varnish specifically designed to provide protection against UV rays, which ensures the specified lifespan of the luminaire.
Entry	HFL => M20 Polyamide Cable Gland HFL-EM => M20 +M16 Polyamide Cable Gland
Exterior nuts and bolts	Stainless steel (AISI304).
General ingress protection	IP66 (EN 60598-1 and EN 60529)
Level of protection against impacts	IK10 (EN 62262)
Operating temperature	Ta -20°C to +35°C According to luminaire configuration.
Estimated life	L90B10 100,000 h at Ta 25°C. Light maintenance values at 25°C. Calculated by TM-21 based on LM-80 data.

ELECTRICAL CHARACTERISTICS

Electrical class	Class I or Class II
Input voltage	220V - 240V / 50Hz - 60Hz Optional 100 V - 277 V
Power factor	> 0.9
Harmonic distortion	< 10%. Other voltages upon request.
Overvoltage protection	Overvoltage protection (1.2/50) 10 kV. Maximum current (8/20) 10kA. Maximum voltage (L-N) 320 V. Maximum voltage (L/N-GND) 400 V. Optional overvoltage protection: 20 kA, 20 kV.
Equipped weight	1.2 Kg—3.5 Kg
Pressure equalisation valve	The luminaire is fitted with a valve that balances the pressure in the luminaire to prevent the build-up of condensation, thereby extending the lifetime of the components.

LIGHTING CHARACTERISTICS

Real luminous flux	HFL => 1,500 lm up to 9,100 lm. (14W - 70W) HFL-EM1=> 586 lm up to 466 lm. HFL-EM3=> 233 lm up to 586 lm. HFL-EMNP (Not permanent), upon request.
LED colour temperature	2,700K (Warm White, ww). 3,000K (Warm White, ww). 4,000K (Neutral White, nw). Other colour temperatures, upon request.
Colour rendering index (CRI)	CRI>80.
LEDs	Includes 1, 2 or 4 LED strips based on the version (24, 96 or 192 LEDs.)
FHS/ULR	0.25% - 3.5%
Photometric configurations	A => Extensive

MANAGEMENT AND CONTROL

Equipment	HFL: 1N: 1 Level RC: Controller dimmed RD: DALI AF: 1 - 10 V RL: Pulse adjustable LED HFL-EM 1 / 3h: 1N: LED 1 level RD: Adjustable LED Protocol DALI
Autonomous regulation	Regulations programmed from the factory: 56: 50% of the 24: 00h at 6: 00h. 66: 60% of the 24: 00h at 6: 00h. 76: 70% of the 24: 00h at 6: 00h. SC: Programming according to client.
CLO regulation	Flow rate during the life of the product: 7: 70% luminous flux throughout the life of the luminaire. 8: 80% luminous flux throughout the life of the luminaire. 9: 90% luminous flux throughout the life of the luminaire.
Node	BS: Controlux Basic

MAINTENANCE AND ASSEMBLY

Installation and maintenance	Pressed polycarbonate side covers with gaskets, which provide a certain degree of protection. Access to the tray with stainless steel screws.
Fixation	FTS: Two Stainless Steel anchors are provided to mount on surface.
Fixations Accessories	There are 4 optional fixation methods: FA: Fixation by ring, for fixation with cables (not included) FT42: Fixation to tube Ø42 mm FT60: Fixation to tube Ø60 mm FAR: Fixation to ceiling with quick release.

LOGISTICAL INFORMATION

HFL L063 a L084

Box Size:	154 X 132 X 765mm
Box Weight:	2kg
Number of boxes:	63 Unidades
Americian base:	1200 x 800 x 1224mm
Stack Heigh:	7 Plantas
Area Occupied:	94,7%
Volume Used:	92,8%
Total Gross weight:	146Kg

HFL L063 a L084

Box Size:	154 X 132 X 1375mm
Box Weight:	3kg
Number of boxes:	42 Unidades
Americian base:	1375x 800 x 1224mm
Stack Heigh:	7 Plantas
Area Occupied:	99%
Volume Used:	89%
Total Gross weight:	146Kg

If the luminaire includes cable, consult box dimensions.

FINISHES

Predefined luminaire colour

RAL 7040	Window Grey Smooth Glossy
-------------	---------------------------