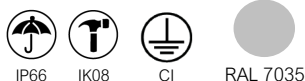


Origen



KEY BENEFITS

- Up to 2 sizes.
- Compact design to optimize logistics and storage, with easy assembly to reduce installation and maintenance costs.
- Multilumen LED light engine to adapt luminous flux to the needs of any project, ensuring high visual comfort.
- Recyclable plastics to facilitate luminaire recycling and contribute to the circular economy.
- Resilient luminaire suitable for wet and dirty environments.
- Durability and sturdiness: IP69K+ IK10
- State-of-the-art LED technology.
- Energy Efficient: 130lm/W
- 3 types of fixation.
- Up to 1 optical distributions.
- Lifetime L70B50 50.000 h at 35°C.
- Option for continuous line mounting.
- 5 years warranty



DESCRIPTION

The Origen luminaire provides a robust solution for various applications, from parking lots to industrial areas. Origen adapts to a wide range of applications with simple requirements, ensuring protection and efficiency. Suitable for dusty and humid environments due to its IP66 and IK08 resistance. Sustainable, with high energy efficiency, light adaptability, and recyclable materials.



4000K
Ra>80



S: 2.500lm - 3.900lm
M: 4.300lm - 6.100lm



-20°C a+ 35°C



130 lm/W



S: 0.80 Kg
M: 0.95 Kg

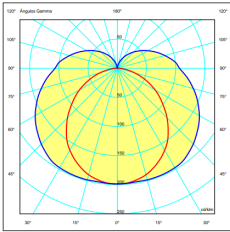
STANDARD COMPLIANCE

- EN 60598-1:2015+AC:2015+AC:2016+AC:2017A1:2018
- EN 60598-2-1:2021
- EN 60598-2-24:2013
- EN 62471:2008
- EN 62493:2015
- EN 55015:2019+A11:2020
- EN 61000-3-2:2014
- EN 61000-3-3:2013
- EN 61547:2009
- EN 50581:2012

220-240V- 50/60HZ
L70B50 50.000 h.

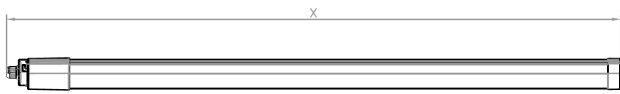
PHOTOMETRIC DISTRIBUTIONS

It has the 1 photometric distribution used for the environments in which this type of luminaire is installed, allows it to adapt to all needs:



IS18

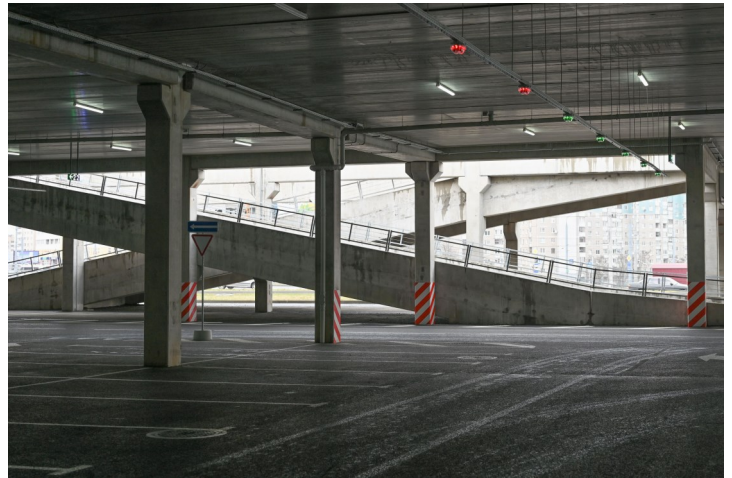
DIMENSIONS



Model	X	Y	Z
S	1.220	58	63
M	1.520	58	63

APPLICATIONS

Logistics centers, corridors and warehouses, industrial areas, indoor parking.



ORIGEN CHARACTERISTICS

GENERAL CHARACTERISTICS

Profile	Extruded polycarbonate with UV protection Upper part grey RAL 7035 Bottom part opal
End caps	Injected polycarbonate
Gasket	PWIS-free silicone
Finition	RAL-7035 Light grey glossy smooth
Cable entry	Cable gland
Fixing clips	Stainless Steel (polyamide optional)
Suspension triangles	Stainless steel
Watertightness	IP66 (EN 60598-1 and EN 60598-2-3)
Impact protection grade	IK08 (EN 62262)
Operating temperature	-20°C to +35°C
Lifetime	L70B50 50.000 h to 35°C.

ELECTRICAL CHARACTERISTICS

Electrical class	Class I
Voltage / Frequency	220-240V- 50/60HZ
Fire protection	Flammability (UL94): V2 Glow wire test (EN 60695-2-11): 850°
Connection	3 pole screwless connector
Power factor	> 0.95 at full power
THD	< 1.5%
Flicker factor	Flicker-free

LIGHTING CHARACTERISTICS

Package real light	S: 2.500lm - 3.900lm (19 - 30W) M: 4.300lm - 6.100lm (33 - 47W)
LED colour temperature	4.000K (Neutral White, nw). Other temperatures, consult.
Index of reproduction chromatic (CRI)	CRI>80.
Optics	PMMA polymethylmethacrylate.

MAINTENANCE AND ASSEMBLY

Installation and maintenance	Easy maintenance
Fixations	Celing fixation Suspended fixation Wall fixation
Weight	S: 0.80 g M: 0.95 g

MANAGEMENT AND CONTROL

Equipment	1N: 1 Level
-----------	-------------