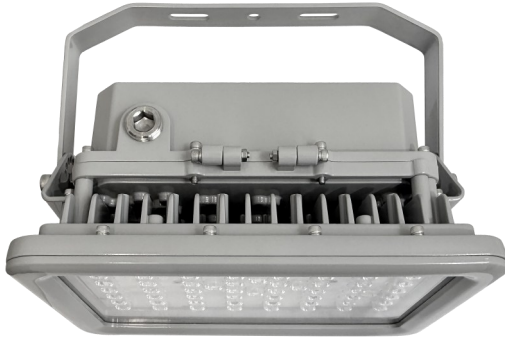


TitanEX Zone 1/21, 2/22



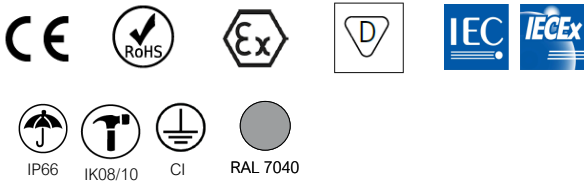
411639 TTN1MCCL214IS90H01A11NZSSSS07040BSCAB



M

KEY BENEFITS

- Designed for zones 1/21, 2/22 ATEX.
- Up to 140lm/ W.
- Sturdiness: IP66 + IK08/10
- LED technology ensuring high-quality lighting and energy reduction.
- Lifetime L70 > 78.000h at Ta 55°C.
- Mounted on the ceiling, wall or suspended.
- 5 years warranty.



DESCRIPTION

TitanEX is Carandini's LED floodlight designed for explosive environments. It is a dustproof and moisture-resistant luminaire with high impact resistance and ATEX Zone 1/21, 2/22 marking, making it ideal for industrial spaces, power plants, chemical plants, metallurgical industries, and even offshore applications.



4000K
CRI > 70



M: 21.000lm



-40°C - +45°C



140lm /W
Luminaire



8 Kg

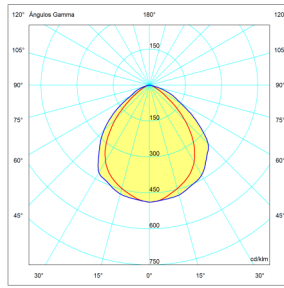
STANDARDS / CERTIFICATES

- CE
- RoHS
- Atez Zona 1/21, 2/22
- II 2 G Ex eb mb IIC T6...T4 Gb
- II 2 D Ex tb IIIC T80°C...T100°C Db

220 - 240V
50-60Hz
L70 78.000h
Ta 55°C

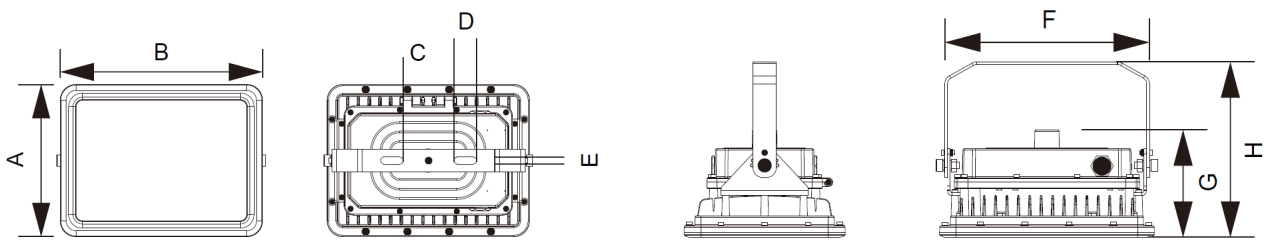
PHOTOMETRIC DISTRIBUTIONS

90° photometric distribution allows it to adapt to all needs.



IS90

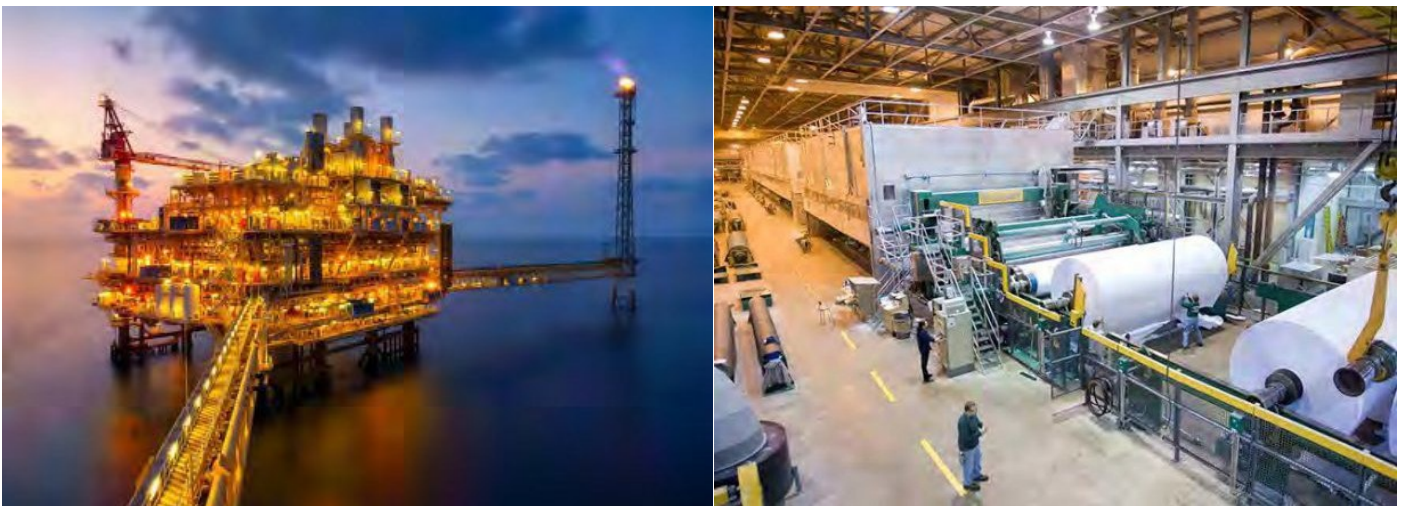
DIMENSIONS (mm)



	A	B	C	D	E	F	G	H
TitanEX M	230	380	135	35	12,5	348	188	268

APPLICATIONS

Industrial. Designed for lighting hazardous areas where an explosive atmosphere is likely during normal operation of the activity.



CHARACTERISTICS

GENERAL CHARACTERISTICS

Materials and finishing	Optical system: Tempered glass and polycarbonate lenses Body: Low-copper die-cast aluminum Color: Light gray
Exterior nuts and bolts	Stainless steel (AISI304)
Watertightness	IP66 (EN 60598-1 and EN 60529)
Impact protection grade	IK08 (EN 62262) IK10 on request
Operating temperature	-40 to + 45°C
Lifespan	L70 78.000h at Ta 55°C.

LIGHTING CHARACTERISTICS

Lumen output	M: 21.000lm (150W)
CCT	4000K
Index of reproduction chromatic (CRI)	CRI>70.
Photometric configurations	90° (IS90)
Light distribution	Symmetrical

ELECTRICAL CHARACTERISTICS

Electrical class	Class I
Input voltage	220V - 240V / 50Hz - 60Hz
Power factor	> 0,95
Harmonic distortion	< 10%

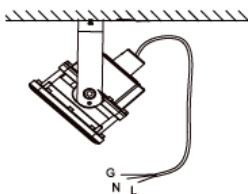
MANAGEMENT AND CONTROL

Driver	1N: LED 1 nivel
--------	-----------------

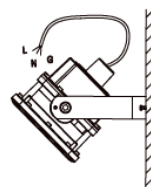
MAINTENANCE AND ASSEMBLY

Installation and maintenance	Ceiling, wall or suspended
Equipped weight	M: 8 kg

Ceiling mount. Bracket included



Wall mount. Bracket included



Suspended mount. Hook and chain as accessory.



CLASSIFICATION OF ATEX ZONES

GASES, VAPOURS OR MISTS	DUST	DEFINITION
ZONE 0	ZONE 20	Permanently presence of explosive atmosphere or for a prolonged period of time, or frequently.
ZONE 1	ZONE 21	Working area in which it is likely, under normal conditions of exploitation, the occasional formation of an explosive atmosphere
ZONE 2	ZONE 22	Working area in which it is NOT likely, under normal conditions of exploitation, the formation of an explosive atmosphere in which, if it is formed, it only remains for short periods of time

II 2 G Ex eb mb IIC T6...T4 Gb

MARK	DEFINITION
II	Equipment for explosive atmospheres (except mines)
2 G	Category 2 (ZONE 1) – For atmospheres with flammable gases, vapors, or mists
Ex	Complies with explosion protection standards
eb mb	Protection "eb" (increased safety) + "mb" (encapsulation)
IIC	Gas group (IIC = the most hazardous, such as hydrogen and acetylene)
T6...T4	Maximum equipment temperature (T6 = max. 85°C, T4 = max. 135°C)
Gb	Protection level: Suitable for ZONE 1

II 2 D Ex tb IIIC T80°C...T100°C Db

MARK	DEFINITION
II	Equipment for explosive atmospheres (except mines)
2 D	Category 2 (ZONE 21) – For atmospheres with combustible dust
Ex	Complies with explosion protection standards
tb	Protection "tb" (encapsulation for dust)
IIIC	Dust group (IIIC = conductive dust, the most hazardous)
T80°C...T100°C	Maximum equipment temperature (80°C - 100°C)
Db	Protection level: Suitable for ZONE 21