

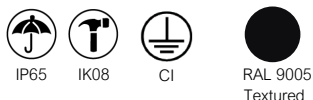
HBK

Gen A - Smart ready highbay



KEY BENEFITS

- LED luminaire for industrial and sports areas.
- Durability: IP65 + IK08.
- Latest-generation LED technology.
- Energy Efficient: Up to 150 lm/W luminaire.
- Adjustable power.
- Lifetime L70B50 100.000h (Ta) 25°C.
- Zhaga socket 0-10V.
- 5 years warranty.



DESCRIPTION

The HBK luminaire is designed to provide solutions for industrial areas or sports facilities that require efficient and uniform lighting, ensuring safe and productive workspaces and competition areas.

Thanks to its power selector, you can access different luminous flux packages with a single “click” and no additional programming. It also includes a Zhaga 0-10V socket, allowing the luminaire to be controlled using Controlux smart systems.



4000K
Ra>80



M: 15.000 - 30.000 lm



-20°C to + 45°C



150 lm /W



M: 3,2 Kg

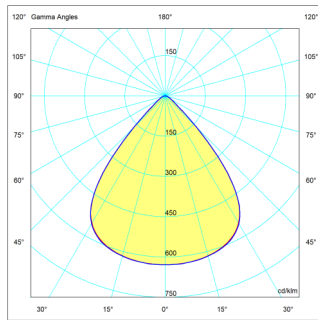
STANDARD COMPLIANCE

- CE
- RoHS
- UNE EN 60598-1
- UNE EN 60598-2-1
- UNE EN 62031
- UNE EN 62384
- UNE 61347-2-13
- UNE EN 62471
- UNE EN 61547
- UNE-EN 61000-3-2
- UNE-EN 61000-3-3
- UNE-EN 55015.
- UNE EN 13032-4

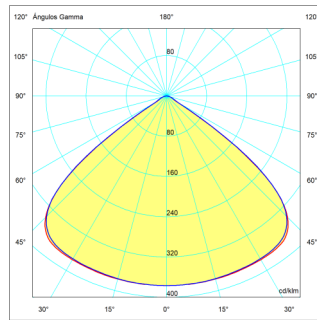
100-277V- 50/60HZ
L70B50 100.000 h.
Ta de 25°C

PHOTOMETRIC DISTRIBUTIONS

It has 2 photometric distributions

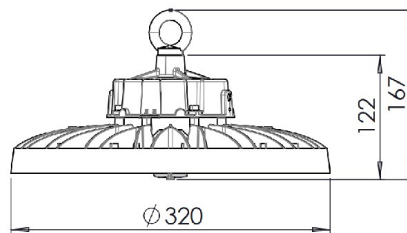
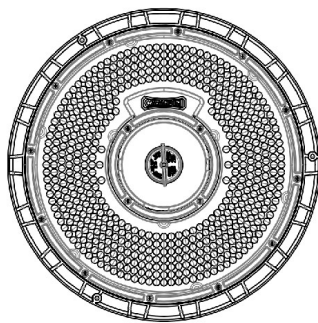


IS09



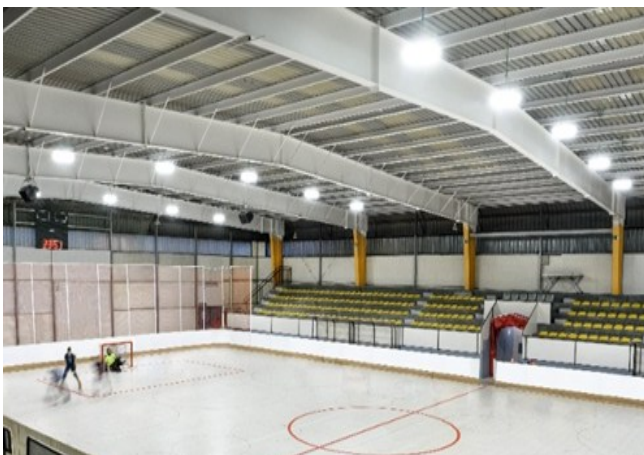
IS12

DIMENSIONS (mm)



APPLICATIONS

Industrial areas, logistics warehouses, sports pavilions.



Distributor: EPK elektro s.r.o.
info@carandini.cz - www.carandini.cz

CHARACTERISTICS HBK

GENERAL INFORMATION

Sustainability	Maximum carbon footprint per use: 0,0566 kg kW/h CO2
CE marking	Yes
RoHS compliance	Yes

GENERAL CHARACTERISTICS

Housing	Die-cast aluminium
Ringbolt	Galvanised iron
Cable	0,3m (1m ²) H05RN-F
Watertightness	IP65 (EN 60529).
Impact protection grade	IK08 (EN 62262).
Operating temperature	Ta -20°C to + 45°C
Estimated lifetime	L70B50 100.000 h T ^a 25°C Light maintenance values at 25° calculated by TM-21 in LM-80 database

ELECTRICAL CHARACTERISTICS

Electrical specification	Class I
Voltage / Frequency	100-277V- 50/60HZ
Power factor	> 0,9 at full power
Surge protection	(6+10)kV driver inbuilt

FINISHES

Predefined luminaire colour

RAL 9005	Polyester Powder Intense Black RAL 9005
-----------------	---

MAINTENANCE AND INSTALLATION

Installation and maintenance	It incorporates one cable for the voltage of the luminaire. Prepared for on-site installation of the luminaire. To maintain the high efficiency of the luminaire, it is necessary to clean the lens surface from time to time. Use a pH-neutral soap with a cloth to clean and dry it.
Fixation	Ringbolt for installation using a suspension point with cable or chain. (cable included) (chain not included).
Weight with equipment	M: 3,2 Kg

LIGHT CHARACTERISTICS

Package real light	M: 15.000 - 30.000 lm (100 - 200W)
LED colour temperature	4.000K (Neutral White, nw).
Index of reproduction chromatic (CRI)	CRI>80.
Photometric distributions	IS09: 90° distribution IS12: 120° distribution
LED thermal control	Efficient heat dissipation by conduction and convection thanks to the design of the structure, which incorporates fins so that the heat dissipates correctly, thus increasing the life of the luminaire components.

MANAGEMENT AND CONTROL

Socket	Zhaga (0-10V). Suitable for 0-10V nodes.
--------	--

Power adjustment via dip switch.

M:	100W - 150W - 200W
----	--------------------

LOGISTICAL INFORMATION

European base	1200 x 800 x 1390 mm
Box size	375 x 375 x 155 mm
Box weight	3,20 kg.
Number of boxes	48 units
Total dimension	1200 x 800 x1390 mm
Stack height	8 levels
Total gross weight	173,6 kg
Total net weight	153,6 kg